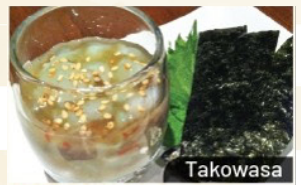


# APPETIZER

<b>GOMA AE</b> (Spinach with sesame sauce)	6.95
<b>EDAMAME</b> (Soybeans)	6.50
<b>TAKO WASA</b> (Raw octopus in wasabi sauce)	6.95
<b>HIYAYAKKO</b> (Cold tofu with seaweed, cucumber & dried bonito flakes)	6.50
<b>VEGGIE SUNOMONO</b>	5.95
<b>EBI SUNOMONO</b> (Prawn)	7.25
<b>TAKO SUNOMONO</b> (Octopus)	7.25
<b>KANI SUNOMONO</b> (Crab)	8.25
<b>CHAWAN MUSHI</b> (Japanese silky steamed egg)	9.50
<b>UNI CHAWAN MUSHI</b>	16.95
<b>TUNA GOMA AE</b> (Tuna with sesame sauce)	11.25
<b>FRESH OYSTER</b> (3 pcs)	9.00
<b>TUNA TATAKI</b> (Sliced tuna in seared with ponzu sauce)	11.25
<b>ASARI SAKAMUSHI</b> (Clam cooked with Japanese wine-Sake)	13.75
<b>ASARI GARLIC BUTTER</b> (Clam cooked with garlic butter)	13.75
<b>ANKIMO</b> (Monk fish livers with ponzu sauce)	18.95



Takowasa



Ebi Sunomono



Chawan Mushi



Tuna Gomaae



Asari Saka mushi



Ankimo



Takoyaki



Spicy Agedashi Tofu



Kaki Fry



Ebi Chili Mayo



Karei Karaage

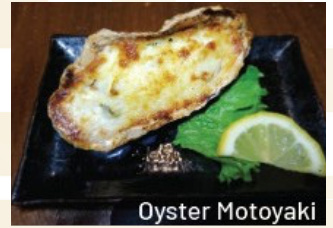
## AGEMONO (DEEP FRIED)

<b>GESO KARA</b> (Deep fried squid legs)	7.75
<b>TAKOYAKI</b> (Fried dumpling made from batter, octopus, ginger and vegetables)	7.50
<b>AGEDASHI TOFU</b> (Deep fried tofu)	8.25
<b>SPICY AGEDASHI TOFU</b>	8.75
<b>EBI CHILI MAYO</b> (Deep fried prawns with chili mayo sauce)	9.75
<b>AMAEBI KARAAGE</b> (Deep fried small sweet prawns)	10.00
<b>CHICKEN KARAAGE</b> (Deep fried marinated chicken)	10.75
<b>IKA KARA</b> (Deep fried squid)	10.75
<b>KAKI FRY</b> (Deep fried oyster)	18.00
<b>SOFT SHELL CRAB</b> (Deep fried soft shell crab)	13.95
<b>KAREI KARAAGE</b> (Deep fried whole sole)	13.95

\* We will add a 18% gratuity (service charge) automatically for parties 8 or more.

## YAKIMONO (GRILLED)

<b>TAMAGO YAKI</b> (Sweet egg omelet)	7.75
<b>OYSTER MOTOYAKI</b> (1pc) (Baked oyster with mayo sauce)	8.95
<b>SEAFOOD MOTOYAKI</b> (1pc) (Baked seafood with mayo sauce)	8.95
<b>IKA GESO</b> (Grilled squid legs)	7.75
<b>YAKI NASU</b> (Grilled eggplant) (Asian eggplant with ginger and dried bonito flakes)	7.95
<b>GYOZA</b> (Homemade dumplings with pork & vegetables)	8.25
<b>IKA SUGATAYAKI</b> (Grilled squid)	10.75
<b>GYU TAN SHIOYAKI</b> (Grilled beef tongue)	10.50
<b>TSUBOYAKI</b> (Grilled conch in the shell)	11.95



Oyster Motoyaki



Gyoza



Ika Sugatayaki

## KUSHIYAKI (GRILLED SKEWERED)

<b>MOTSU KUSHI YAKI</b> (2pcs) (Grilled skewered pork intestine)	6.95
<b>TSUBUGAI KUSHI YAKI</b> (2pcs) (Grilled skewered conch)	6.95
<b>TONTORO KUSHI YAKI</b> (2pcs) (Grilled skewered pork belly with miso sauce)	7.75
<b>MIRUGAI KUSHI YAKI</b> (2pcs) (Grilled skewered Geoduck)	8.95
<b>YAKI TORI</b> (2pcs) (Grilled skewered chicken with special sauce)	9.50



Motsu Kushi-yaki



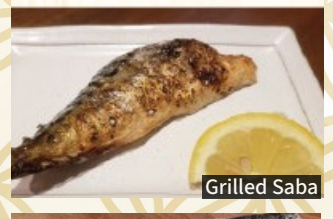
Tontoro Kushi-yaki

## YAKIZAKANA (GRILLED SALTED FISH)

<b>SHISHAMO</b> (Grilled smelt)	7.95
<b>SABA</b> (Grilled mackerel)	7.95
<b>SANMA</b> (Grilled pike mackerel)	8.50
<b>SALMON KAMA</b> (Grilled salmon head & neck)	8.50
<b>SALMON HARAMI</b> (Grilled salmon belly)	10.50
<b>SOCKEYE SALMON KAMA</b> (Grilled sockeye salmon neck)	10.95
<b>SOCKEYE SALMON HARAMI</b> (Grilled sockeye salmon belly)	10.95
<b>GINDARA KAMA</b> (Grilled black cod neck)	10.75
<b>HOKKE</b> (Grilled whole atka mackerel)	14.50
<b>GINDARA SAIKYO YAKI</b> (Broiled miso marinated black cod)	17.95
<b>HAMACHI KAMA</b> (Grilled yellowtail neck)	17.25
<b>TAI KAMA</b> (Grilled sea bream head & neck)	16.95



Grilled Salmon Belly



Grilled Saba



Hokke: Grilled Atka fish



Gindara Saikyo Yaki

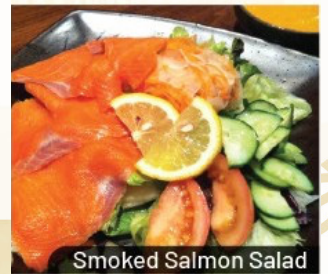
## NI ZAKANA (JAPANESE STYLE SIMMERED FISH)

- KAREI NO NITSUKE** 14.50  
 (Simmered whole sole) \*takes about 20 mins
- KINKI NO NITSUKE** 16.95  
 (Simmered kinki fish) \*takes about 20 mins



## SALAD

- SEAWEED SALAD** 7.25
- GREEN SALAD** 7.95
- BEEF SALAD** 12.95  
 (Shabu shabu beef with seasonal vegetables)
- COLD RAMEN SALAD** 12.95  
 (Cold noodle with seasonal vegetables)
- SMOKED SALMON SALAD** 14.00  
 (Smoked salmon with seasonal vegetables)
- SASHIMI SALAD** 18.50



## TERIYAKI (Comes with rice and salad)

- TOFU TERIYAKI** 13.95
- CHICKEN TERIYAKI** 15.25
- BEEF TERIYAKI** 16.50
- SOCKEYE SALMON TERIYAKI** 19.50



## CURRY

- CURRY RICE** 13.50  
 (Chicken and vegetables in curry with rice)
- KATSU CURRY** 19.95  
 (Deep fried pork cutlet with curry rice)



## A LA CARTE

- TONKATSU** (Deep fried pork cutlet) 15.75
- CHICKEN KATSU** (Deep fried chicken cutlet) 15.75



### SIDE ORDER

RICE	MISO SOUP
2.00	2.00

ASARI MISO (clam miso soup)  
 4.95

\*All prices are subject to change without notice and not include applicable taxes.

## DONBURI (Rice Bowl / comes with miso soup)

OYAKO DON 14.50

CHICKEN TERIYAKI DON 15.25

CHICKEN KARAAGE DON 16.25

(Deep fried marinated chicken, salad, mayo and teriyaki sauce on top)

TEN DON 14.75

(Deep fried prawn & vegetables tempura)

PRAWN TEN DON 15.50

BEEF TERIYAKI DON 16.50

SUKIYAKI DON 16.25

(Thin sliced beef, noodle and vegetables)

KATSU DON 18.50

(Deep fried pork cutlet, onion, green onion and egg)

UNAGI DON 22.00

(BBQ eel)

## HOT POT

FISH KAMA HOT POT 21.50

(Daily fish head & neck, fresh vegetable, tofu, noodles in soup, served with ponzu sauce)

COD HOT POT 26.50

(Cod, fresh vegetables, tofu, noodles in soup, served with ponzu sauce)

SPICY COD HOT POT 26.50

(Cod, fresh vegetables, tofu, noodles in spicy soup)

SUKIYAKI 26.50

(Thinly sliced beef, fresh vegetables, noodles, tofu cooked in special sukiyaki sauce)

YOSENABE 27.95

(Mix seafoods, fresh vegetables, noodles, tofu in soup, served with ponzu sauce)

## TEMPURA

ANAGO TEMPURA (1 pc) (Fresh sea eel) 6.75

YAM TEMPURA 8.50

APPETIZER TEMPURA 8.95

VEGETABLE TEMPURA 12.00

ASSORTED TEMPURA 13.25

PRAWN TEMPURA 12.95

DELUXE TEMPURA 19.95



Beef Teriyaki Don



Sukiyaki Don



Katsu Don



Cod Hot Pot



Yosenabe



Yam Tempura



Prawn Tempura



Deluxe Tempura



Go green. Please reduce the plastic waste.  
take out container \$0.25 each / take out bag \$0.15 each



## NOODLE (Noodle in soup)

PLAIN UDON	9.25
KITSUNE UDON	11.75
VEGETABLE UDON	12.50
CURRY UDON	13.50
CHICKEN UDON	15.25
TEMPURA UDON	15.75
BEEF UDON	15.75
NABEYAKI UDON	19.50
SEAFOOD MISO UDON	27.50
MISO RAMEN	14.50



Nabeyaki Udon



Yakisoba



Seafood Miso Udon



Miso Ramen



Mentai Kimchi Yaki Udon



Zaru Soba



Maki Combo (C)



Sushi Combo (A)

## PAN FRIED NOODLE

### YAKI SOBA / YAKI UDON

(Vegetable) 14.00 / (Chicken) 15.25  
(Beef) 16.75

MENTAI KIMCHI YAKI UDON 15.25

## COLD NOODLE

ZARU SOBA (Buckwheat noodle) 13.50

TEN ZARU SOBA (Buckwheat noodle with side tempura) 19.95

## MAKI COMBO

MAKI (A) 15.00  
(California, tuna & salmon roll)

MAKI (B) 23.25  
(California, dynamite, tuna & salmon roll)

MAKI (C) 27.95  
(California, futomaki (4pcs), BC, tuna & salmon roll)

## SUSHI COMBO

SUSHI COMBO (A) 17.25  
California roll, tuna, salmon, ebi, tamago nigiri (1 pc each)

SUSHI COMBO (B) 19.50  
Dynamite roll, tuna, salmon, ebi, tamago nigiri (1 pc each)

SUSHI COMBO (C) 24.50  
Ebi, salmon nigiri (2 pcs each), tuna nigiri (4 pcs)

## DINNER BOX

VEGETARIAN BOX (no meat options) 22.00  
(Avocado roll, tofu teriyaki, vegetable tempura, green salad, sunomono, daily special, fruit, miso & rice)

SUSHI DINNER BOX 25.50  
(Sushi, roll, \*beef or chicken teriyaki, tempura, green salad, sunomono, daily special, fruit, miso & rice)

SASHIMI DINNER BOX 27.50  
(Sashimi, \*beef or chicken teriyaki, tempura, green salad, sunomono, daily special, fruit, miso & rice)

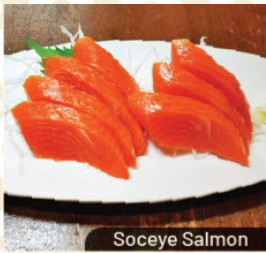


Sushi Dinner Box

\*Beef Teriyaki + \$1.50

# SASHIMI

<b>TUNA</b>	(4 pcs) 11.00 / (7 pcs) 18.50
<b>SALMON</b>	(4 pcs) 11.50 / (7 pcs) 19.00
<b>SOCKEYE SALMON</b>	(4 pcs) 13.00 / (7 pcs) 22.50
<b>HAMACHI</b> (Yellowtail)	(4 pcs) 18.00 / (7 pcs) 30.25
<b>TAKO</b> (Octopus)	(4 pcs) 13.00
<b>TORO</b> (Tuna belly)	(4 pcs) 14.50
<b>ASSORTED SASHIMI</b>	37.00
<b>DELUXE ASSORTED SASHIMI</b>	51.00
<b>CHEF'S SPECIAL SASHIMI</b>	69.00
<b>OMAKASE SASHIMI</b> (Chef's creation)	Starting \$40 per person
<i>AJI, MIRUGAI, SHIMA AJI, KANPACHI, TAI, UNI, KODAI, AMAEBI, SAYORI, KATSUO, IWASHI, SANMA, TOBIUO and more</i>	Current price



Soyeye Salmon



Hamachi



Toro



Assorted Sashimi



Deluxe Assorted Sashimi



Chef's Special Sashimi



Aji



Amaebi



Isaki



Bluefin O-Toro



Tai



Live Hotate Sashimi + BBQ Hotate in the shell



Live Sea Urchin



Tobiuo



Mirugai



Omakase Sashimi for 2



Renko Dai



Sanma



Sayori



Tachi Uo

\*All prices are subject to change without notice and not include applicable taxes.

# SUSHI A LA CARTE

- ASSORTED NIGIRI** 19.50  
(6 pcs nigiri & tuna roll)
- DELUXE ASSORTED NIGIRI** 36.50  
(10 pcs nigiri & tuna roll)
- MATOI ASSORTED NIGIRI** 65.50  
(18 pcs nigiri, tuna & salmon roll)
- OMAKASE NIGIRI** Starting \$50 per person  
(Chef's creation / change depending on the day)



Matoi Assorted Nigiri



Omakase Nigiri for 3

## SUSHI RICE BOWL comes miso soup

- TEKKA DON** (Tuna) 18.50
- SALMON DON** 19.00
- TUNA & SALMON DON** 19.00
- SOCKEYE SALMON DON** 23.00
- SALMON & IKURA** (Salmon roe) **DON** 23.50
- IKURA DON** (Salmon roe) 25.50
- CHIRASHI** 25.50  
(Assorted sashimi on sushi rice)
- DELUXE CHIRASHI** 32.50  
(Special assorted sashimi on sushi rice)
- SPICY CHIRASHI** (Korean style chirashi) 24.50  
(Chopped assorted sashimi and salad on steamed rice, mix with korean spicy sauce)



Deluxe Chirashi



Spicy Chirashi

## SPECIAL ROLL

- SPIDER ROLL** 10.25  
(Deep fried soft shell crab, imitation crab, lettuce, cucumber, mayo and roe)
- UNATEN ROLL** 10.25  
(Prawn tempura, cucumber, mayo and BBQ eel on top)
- TORI ROLL** (Chicken teriyaki roll) 9.50  
(Chicken, cucumber, lettuce, mayo and teriyaki sauce)
- GYU ROLL** (Beef teriyaki roll) 9.75  
(Beef, cucumber, lettuce, mayo and teriyaki sauce)
- SMOKED SALMON ROLL** 10.25  
(Smoked salmon, cucumber, cream cheese, roe, imitation crab and mayo)
- PHILADELPHIA ROLL** 10.50  
(BBQ eel, cucumber, cream cheese, imitation crab, roe and mayo)
- RAINBOW ROLL** 16.50  
(Imitation crab, cucumber, roe, mayo and tuna, salmon, hamachi, avocado on top)
- HANABI ROLL** 10.95  
(Deep fried California Roll with spicy special sauce and roe)



Spider Roll



Unaten Roll



Smoked Salmon Roll



Philadelphia Roll



Rainbow Roll

### ADDITIONAL (for your roll)

- Spicy sauce +\$0.30 / Avocado +\$1.50 / Cucumber +\$0.75
- Cream Cheese +\$1.50 / Change to real crab +\$4.50

\*All prices are subject to change without notice and not include applicable taxes.

# MAKI / ROLL & TEMAKI (CONE)

<b>KAPPA MAKI</b> (Cucumber)	3.95
<b>OSHINKO MAKI</b> (Pickled radish)	3.95
<b>KANPYO MAKI</b> (Seasoned gourd shavings)	3.95
<b>TEKKA MAKI</b> (Tuna)	4.50
<b>SALMON MAKI</b>	4.75
<b>UMESHISO MAKI</b> (Plum and shiso leaf)	5.25
<b>NATTO MAKI</b> (Fermented soybeans & green onion)	5.25
<b>NEGITORO MAKI</b> (Chopped toro and green onion)	5.50
<b>SOCKEYE SALMON MAKI</b>	5.75
<b>NEGIHAMA MAKI</b> (Hamachi & green onion)	8.75
<b>IKA UME SHISO MAKI</b>	6.50
<b>IKA NATTO MAKI</b>	6.50
<b>TAMAGO ROLL</b>	5.50
<b>AVOCADO ROLL</b>	6.00
<b>CALIFORNIA ROLL (A)</b> (Imitation crab, avocado, mayo and roe)	6.00
<b>CALIFORNIA ROLL (B)</b> (with real crab)	8.50
<b>AVOCADO &amp; CUCUMBER ROLL</b>	6.25
<b>SPICY TUNA ROLL</b>	6.75
<b>YAM TEMPURA ROLL</b>	6.95
<b>VEGETABLE ROLL</b> (Avocado, carrot, broccoli and mayo)	6.95
<b>SPICY SALMON ROLL</b>	6.95
<b>BC ROLL</b> (BBQ Salmon skin, cucumber and imitation crab)	7.25
<b>TUNA &amp; AVOCADO ROLL</b>	7.50
<b>YAM &amp; AVOCADO ROLL</b>	7.50
<b>CHOPPED SCALLOP ROLL</b>	7.50
<b>SALMON &amp; AVOCADO ROLL</b>	7.50
<b>SPICY SOCKEYE SALMON ROLL</b>	7.95
<b>ALASKA ROLL</b> (8pcs) (Salmon, avocado, imitation crab, mayo & roe on top)	8.25
<b>DYNAMITE ROLL</b> (5pcs) (2 prawn tempura, imitation crab, lettuce, cucumber, mayo & roe)	8.25
<b>SOCKEYE SALMON &amp; AVOCADO ROLL</b>	8.95
<b>UNAGI ROLL</b> (BBQ eel & cucumber)	9.25
<b>MATOI ROLL</b> (5pcs) (Salmon, imitation crab, cucumber, lettuce, egg, mayo & roe)	9.95
<b>FUTOMAKI</b> (4pcs) 7.50 / (8pcs) 12.95 (Japanese traditional roll / egg, cucumber, kanpyo & sweet fish flake)	





# NIGIRI SUSHI (Per piece)

<b>TAMAGO</b> (Egg)	2.25
<b>INARI</b> (Bean curd)	2.50
<b>MAGURO</b> (Tuna) / <b>MASAGO</b> (Smelt roe)	3.15
<b>EBI</b> (Cooked prawn) / <b>IKA</b> (Squid)	
<b>SAKE</b> (Salmon) / <b>TOBIKO</b> (Flying fish roe)	3.25
<b>TAKO</b> (Octopus)	
<b>SOCKEYE SALMON</b> / <b>TSUBUGAI</b> (Conch)	3.75
<b>HOTATE</b> (Bay Scallop) / <b>TORO</b> (Tuna belly),	3.95
<b>CHOPPED SCALLOP</b> (Bay scallop, roe & mayo)	
<b>SABA</b> (Mackerel)	4.25
<b>TOBIKO + UZURA</b> (Flying fish roe + Quail egg)	
<b>UNAGI</b> (Fresh water eel)	4.50
<b>HAMACHI</b> (Yellowtail)	4.75
<b>IKURA</b> (Salmon roe) / <b>KANI</b> (Real Crab),	4.95
<b>SPECIAL KANI</b> (Real Crab, roe & mayo)	
<b>TAI</b> (Sea bream) / <b>AJI</b> (Horse mackerel)	5.25
<b>AMAEBI</b> (Sweet prawn)	6.00
<b>UNI</b> (Sea urchin) / <b>SHIMA AJI</b> (Striped jack) <u>Current Price</u>	
<b>HIRAME</b> (Flounder) / <b>SUZUKI</b> (Suzuki) / <b>ANAGO</b> (Sea eel)	
<b>KANPACHI</b> (Amber jack) / <b>MIRUGAI</b> (Geoduck)	
<b>BLUEFIN TUNA</b> / <b>MEJINA</b> / <b>MEBACHI TUNA</b> (Bigeye tuna)	
<b>KOHADA</b> (Spotted sardine) / <b>SAYORI</b> (Halfbeak) and more	



## ADDITIONAL (for your Nigiri Sushi)

Aburi Sushi ( Flamed Seared Sushi) + \$0.75 / Uzura (Quail Egg) + \$1.00

# PARTY TRAYS

<b>(A)</b> (For 3 to 4 people)	66
Tuna, Ebi, Ika, Tako, Tobiko, Tamago (2pcs each), Salmon (4pcs), California Roll (2 rolls), Tekka and Salmon Maki (1 roll each)	
<b>(B)</b> (For 3 to 4 people)	59
Futomaki, BC Roll, Dynamite Roll (1 roll each), California Roll, Tekka Maki, Salmon Maki (2 rolls each)	
<b>(C)</b> (For 5 to 6 people)	87
Tuna, Ebi, Salmon, Ika, Tako, Tamago (4pcs each), California Roll (2 rolls), Tekka and Salmon Maki (1 roll each)	



\*\*All items & prices are subject to change without notice and not include applicable taxes.

# VEGETARIAN SUGGESTION

<b>VEGGIE SUNOMONO</b> (Clear noodle, seaweed, cucumber, broccoli, lemon and sesame)	5.95
<b>GOMA AE</b> (Spinach with sesame sauce)	6.95
<b>EDAMAME</b> (Soybeans)	6.50
<b>HIYAYAKKO</b> (Cold tofu with ginger, seaweed, cucumber )	6.50
<b>AGEDASHI TOFU</b> (Deep fried tofu)	8.25
<b>SPICY AGEDASHI TOFU</b>	8.75
<b>YAKI NASU</b> (BBQ Eggplant) (Asian eggplant with ginger)	7.95
<b>GREEN SALAD</b>	7.95
<b>SEAWEED SALAD</b>	7.25
<b>TOFU TERIYAKI</b>	13.95
<b>VEGETABLE TEN DON</b> (Deep fried vegetables tempura rice bowl)	13.50
<b>VEGETABLE UDON</b> (Vegetables and udon noodle in soup)	12.50
<b>VEGETABLE YAKISOBA</b> (Pan fried egg noodle with vegetables)	14.00
<b>VEGETABLE YAKIUDON</b> (Pan fried thick udon noodle with vegetables)	14.00
<b>ZARU SOBA</b> (Cold buck wheat noodle )	13.50
<b>VEGETABLE TEMPURA</b>	12.00
<b>VEGETARIAN DINNER BOX</b> (Avocado roll, vegetable tempura, tofu teriyaki, green salad, sunomono, daily special, fruit, miso and rice)	22.00
<b>KAPPA MAKI</b> (Cucumber)	3.95
<b>OSHINKO MAKI</b> (Pickled radish)	3.95
<b>KANPYO MAKI</b> (Seasoned gourd shavings)	3.95
<b>UMESHISO MAKI</b> (Plum and shiso leaf)	5.25
<b>NATTO MAKI</b> (Fermented soybeans & green onion)	5.25
<b>AVOCADO ROLL</b>	6.00
<b>AVOCADO &amp; CUCUMBER ROLL</b>	6.25
<b>VEGETABLE ROLL</b> (Avocado, carrot, broccoli and mayo)	6.95
<b>YAM TEMPURA ROLL</b>	6.95
<b>YAM &amp; AVOCADO ROLL</b>	7.50



Veggie Sunomono



Vegetable Yakisoba



Vegetarian Dinner Box



Kappa Maki



Umeshiso Maki



Vegetable Roll



Yam & Avocado Roll

\*Please advise your server for food allergies.

\*\*All price are subject to change without notice and not include applicable taxes.